

Prof SHAW Pang Chui 邵鵬柱教授 Email: pcshaw@cuhk.edu.hk; Tel: 3943-1363



Office: SC180
Lab: SC195, SCE310

Position Professor, School of Life Sciences
Director, Biochemistry Programme, School of Life Sciences
Director, Li Dak Sum Yip Yio Chin R & D Centre for Chinese Medicine
Deputy Director, Institute of Chinese Medicine



Education Ph. D., Imperial College, University of London

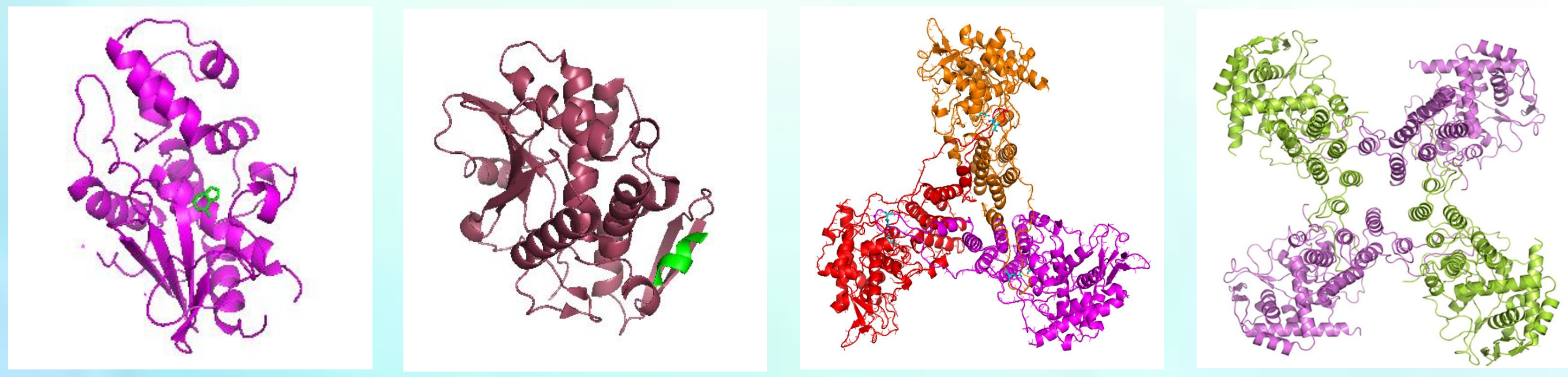
Research Interests

Structure-function studies of proteins
Authentication and quality control of Chinese Medicinal material (CMM)

Authentication of CMM



Protein structure and function



Maize ribosome-inactivating protein with adenine at the active site (PDB: 2PQJ)
Ricin A in complex with ribosomal P2 peptide (PDB: 5GU4)
Influenza A (H5N1) nucleoprotein (PDB: 2Q06)
Influenza B nucleoprotein (PDB: 3TJ0)



Research Grants (PI, in the past 3 years)

1. Isolation and characterization of unique RNA N-glycosidases from mushrooms, GRF
2. Development of rapid screening protocol to identify shark fins from endangered species, ECF
3. Study on the interaction of influenza A virus nucleoprotein and polymerase PB2 N-terminal region, GRF
4. Investigation of the antitussive effects of a folk medicine, Cardiocrinum seeds, HMRF

Publications

Total no. of refereed papers: 220, book chapter: 6, book: 3; US patent: 3; Chinese patent: 4

Recent Selected Journal papers

1. Wong TH, But GW, Wu HY, Tsang SS, Lau DT, Shaw PC, 2018. Medicinal Materials DNA Barcode Database (MMDBD) version 1.5—one-stop solution for storage, BLAST, alignment and primer design. *Database*. 2018:1-7.
2. Shou JW, Zhang RR, Wu HY, Xia X, Nie H, Jiang RW, Shaw PC, 2018. Isolation of novel biflavonoids from *Cardiocrinum giganteum* seeds and characterization of their antitussive activities. *J Ethnopharmacol*. 222:171-176.
3. Lo CY, Li OT, Tang WP, Hu C, Wang GX, Ngo JC, Wan DC, Poon LL, Shaw PC, 2018. Identification of influenza polymerase inhibitors targeting C-terminal domain of PA through surface plasmon resonance screening. *Sci Rep*. 8(1):2280.
4. Lo YT, Shaw PC, 2018. DNA-based techniques for authentication of processed food and food supplements. *Food Chem*. 240:767-774.
5. Liu M, Lo CY, Wang G, Chow HF, Ngo JC, Wan DC, Poon LL, Shaw PC, 2017. Identification of influenza polymerase inhibitors targeting polymerase PB2 cap-binding domain through virtual screening. *Antiviral Res*. 144:186-195.

